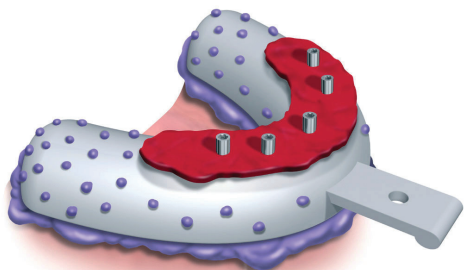


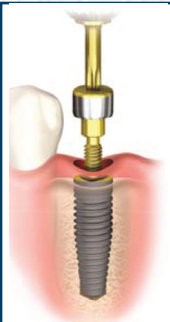
## Implant Impression Techniques OPEN TRAY QUICK GUIDE



### Open Tray Indication:

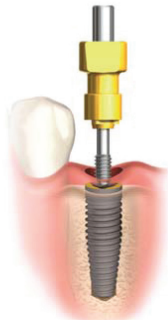
When implants are not parallel and the path of insertion is divergent.

If asking for impression copings, Prodenco will provide closed tray copings unless open tray is requested.



#### Step 1

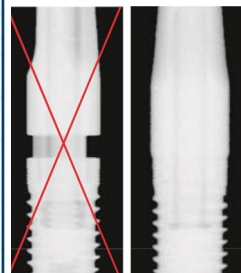
Remove the healing abutment using screwdriver, rotating counterclockwise.



#### Step 2

Place the open tray impression coping into the implant. Ensure the configuration in the implant.

Tighten guide pin using screwdriver. Verify proper seating of the impression coping.

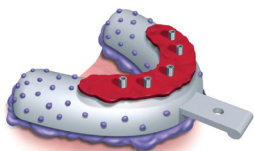


#### Step 3

Take a radiograph to verify proper seating of impression coping. The radiograph should be positioned parallel to the long axis of implant.

#### Step 4

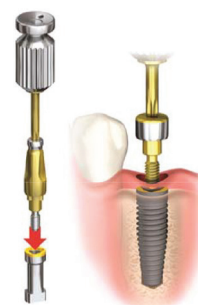
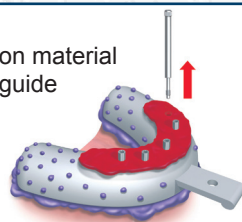
Relieve and perforate impression tray to allow full seating of tray and protrusion of guide pins. If there is large opening, it may be closed off using baseplate wax, with guide pins indenting or perforating wax. INJECT impression material around each coping. FILL tray with impression material and seat impression tray fully so tips of all guide pins are identified.



#### Step 5

After the impression material has set, unscrew guide pins. Remove impression tray and send to Prodenco, including pin guides.

For model fabrication, corresponding implant replicas will be provided by Prodenco.



#### Step 6

Replace the healing abutment.

### Common Causes for Retakes:

**Distorted impression:** To prevent distortion, stabilize the tray while material is setting

**Voids & bubbles:** Use enough material and keep tip submerged while extruding material

**Insufficient capture of detail around coping:** Syringe material without creating air bubbles around copings by keeping mix tip submerged

#### PROFESSIONAL DENTAL COMPANY

611 Omaha Street  
P.O. Box 1257  
Sioux City, Iowa 51102  
712-252-4034 • 800-831-0936  
Fax 712-252-3037

#### JAEGER DENTAL COMPANY

2218 West 2nd Street  
P.O. Box 4908  
Grand Island, NE 68802  
308-382-0235 800-289-3525  
Fax 308-382-2208

#### BILLINGS DENTAL LABORATORY

1407 N. 203rd Street  
Elkhorn, NE 68022-1771  
402-551-5954 • 800-747-5441  
Fax 402-551-0498

## Implant Impression Techniques CLOSED TRAY QUICK GUIDE



### Closed Tray Indication:

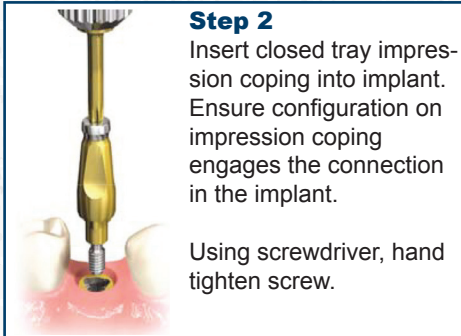
Limited inter-arch space; difficult access in the posterior region of mouth.

If asking for impression copings, Prodenco will provide closed tray copings unless open tray is requested.



#### Step 1

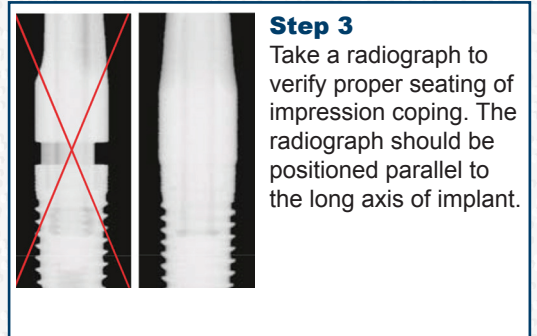
Remove the healing abutment using screwdriver, rotating counterclockwise.



#### Step 2

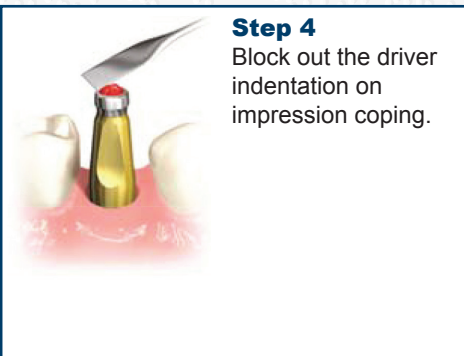
Insert closed tray impression coping into implant. Ensure configuration on impression coping engages the connection in the implant.

Using screwdriver, hand tighten screw.



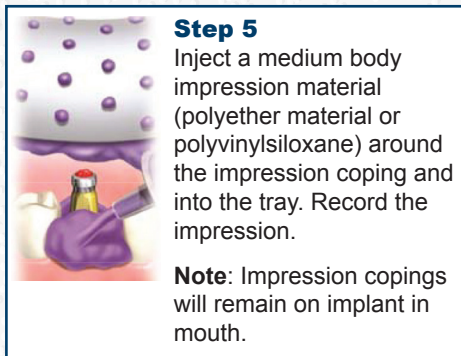
#### Step 3

Take a radiograph to verify proper seating of impression coping. The radiograph should be positioned parallel to the long axis of implant.



#### Step 4

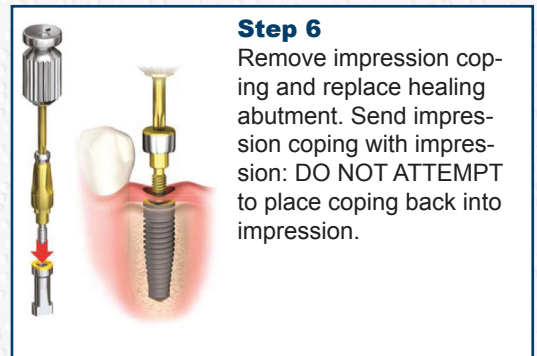
Block out the driver indentation on impression coping.



#### Step 5

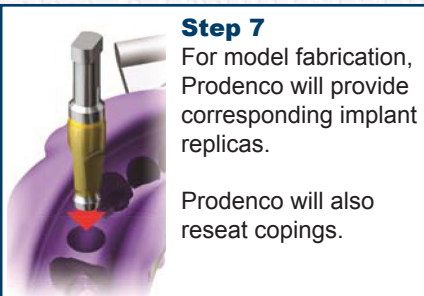
Inject a medium body impression material (polyether material or polyvinylsiloxane) around the impression coping and into the tray. Record the impression.

**Note:** Impression copings will remain on implant in mouth.



#### Step 6

Remove impression coping and replace healing abutment. Send impression coping with impression: **DO NOT ATTEMPT** to place coping back into impression.



#### Step 7

For model fabrication, Prodenco will provide corresponding implant replicas.

Prodenco will also reseat copings.

### Common Causes for Retakes:

**Distorted impression:** To prevent distortion, stabilize the tray while material is setting, making sure to follow manufacturer's setting time and temperature.

**Voids & bubbles:** Use enough material and keep tip submerged while extruding material.

**Insufficient capture of detail around coping:** Syringe material without creating air bubbles around copings by keeping mix tip submerged.

#### PROFESSIONAL DENTAL COMPANY

611 Omaha Street  
P.O. Box 1257  
Sioux City, Iowa 51102  
712-252-4034 • 800-831-0936  
Fax 712-252-3037

#### JAEGER DENTAL COMPANY

2218 West 2nd Street  
P.O. Box 4908  
Grand Island, NE 68802  
308-382-0235 800-289-3525  
Fax 308-382-2208

#### BILLINGS DENTAL LABORATORY

1407 N. 203rd Street  
Elkhorn, NE 68022-1771  
402-551-5954 • 800-747-5441  
Fax 402-551-0498