

PROSTHETIC REPAIR IMPRESSION GUIDE

Rebasing/Relining

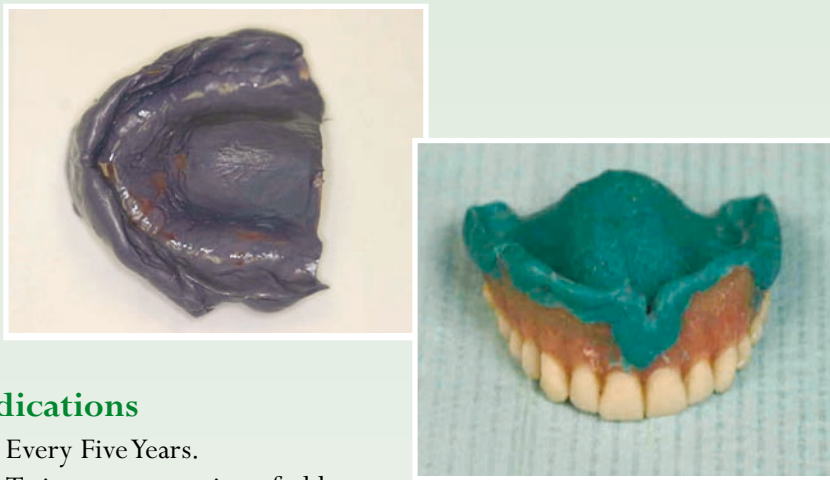
Rebasing

Process of refitting a denture by replacing the denture base material without changing teeth or occlusal relation of the teeth.

Relining

Procedure used to refit the tissue surface of a denture. This is done by placing a new acrylic "wash" into the denture, duplicating the new form of the oral structures in the mouth.

Dentures



Indications

1. Every Five Years.
2. To increase retention of old dentures (due to recent extractions or alterations to the ridge).
3. Avoids the necessity of remaking them entirely.
4. Persistent fractures.
5. Poor fit.

Procedure

1. Trim internal surface from the denture to avoid increasing vertical dimension and allow space for impression material (suggested material PVS Monophase, tissue conditioner or Polyether), apply adhesive and take a wash impression.
2. Before the material sets, ensure the patient is in centric occlusion (have patient bite while the material sets).
3. Remove and disinfect the impression.
4. Send to **Prodenco**.

Partials

Indications

1. Every Five Years
2. Avoids the necessity of remaking them entirely.
3. Poor fit.

Procedure

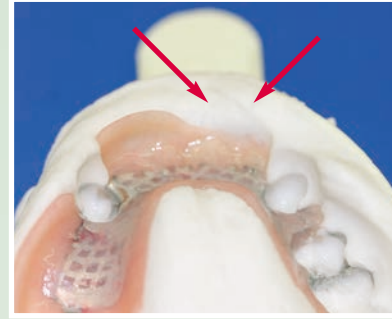
1. Trim internal surface from the partial to avoid increasing vertical dimension and allow space for impression material (suggested material PVS Monophase, tissue conditioner or Polyether), apply adhesive and take a wash impression.
2. Once the wash material sets. Take an impression over the partial in place.
3. Allow for appropriate setting time of material, then remove impression from the mouth keeping the partial in the impression.
4. Pour immediately or send it to **Prodenco** according to the materials instructions (different materials working/pour-up times vary, see instructions).
5. Take and send opposing arch and bite registration along with pick-up impression.



Acrylic Repairs

Flange Fracture

If you have the broken piece, glue (Krazy Glue) it and verify the fit in the patient's mouth and send it to **Prodenco**.



If a new piece is necessary, take an impression with the appliance in place.

1. Allow for appropriate setting time of material, then remove impression from the mouth keeping the partial in the impression.
2. Pour immediately or send it to **Prodenco** according to the materials instructions (different materials working/pour-up times vary, see instructions).

Midline Fracture

If the fracture has a clean break, glue (Krazy Glue) the pieces together, verifying the fit in the patient's mouth. Send to **Prodenco**.



Cracks

Send to **Prodenco** as is.



Replace Lost Tooth

Send the appliance to **Prodenco** along with the tooth if available.



Add Additional Tooth to an Existing Partial

Take an impression with the partial in place and remove prosthesis from the mouth, keeping the partial **in the impression** and send it to **Prodenco** along with the opposing arch, bite registration and shade if necessary.



Cu-Sil (Gasket Replacement)

1. Remove the old Cu-Sil.
2. Place the denture into the mouth and inject the impression material around the tooth (use light body or Monophase material).
3. Ensure that the material replicates the space left for the Cu-Sil and the entire surface of the abutment teeth.



Cu-Sil Reline

1. Remove all Cu-Sil.
2. Trim the internal surface from the denture to avoid increasing the vertical dimension and allow space for the impression material (use PVS Monophase or Polyether), apply adhesive and take a wash impression.
3. Ensure that the material replicates the space left for the Cu-Sil and the entire surface of the abutment teeth.

Cast Partial Repairs

Broken Clasp Or Major Connector

1. Take the impression with the partial in place.
2. After proper setting time, remove the impression *keeping the partial in the impression*.
3. Pour immediately or send it to **Prodenco** according to material instructions.
4. If you have the clasp, send it along with the partial still in the impression.



Partial Denture Refit

Take an impression **with-out** the partial in place, send the impression or model along with the partial to **Prodenco**.



Crown & Bridge

Crown Under Partial

- Take an impression with the partial in place. After proper setting time, remove the impression *keeping the partial in the impression*. **If the margins are not captured**, take another impression without the partial in place, for adaptation of crowns and margins. Send **both** impressions to **Prodenco** along with an opposing impression/model and a bite registration.
- It is recommend that we have the partial in the laboratory for the entire time it takes to fabricate the crown. If that is not possible please contact us for alternative arrangements.



Porcelain Fracture On PFM or Bridge

1. If occurred during seating, send crown, impression and all model work back to Prodenco.
2. If occurs on existing or previously seated crown, and making a new crown is not possible, it is recommended to try using a porcelain repair kit.



Billings Dental Laboratories
6108 Maple St.
P.O. Box 4258
Omaha, NE 68104
402-551-5954 1-800-747-5441

Jaeger Dental Company
2218 West 2nd Street
P.O. Box 4908
Grand Island, NE 68802
308-382-0235 1-800-289-3525

Professional Dental Company
611 Omaha Street
P.O. Box 1257
Sioux City, IA 51102
712-252-4034 1-800-831-0936